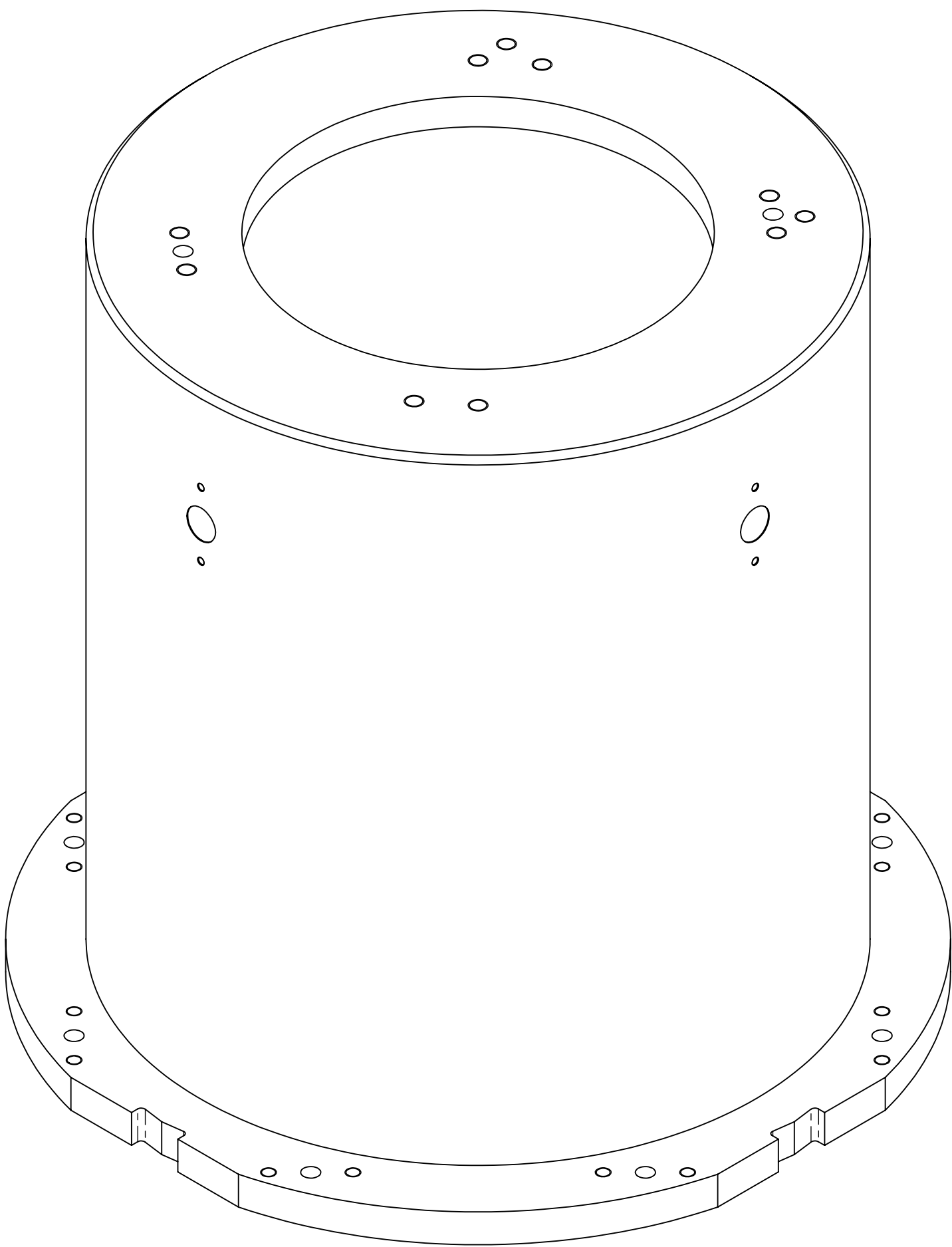
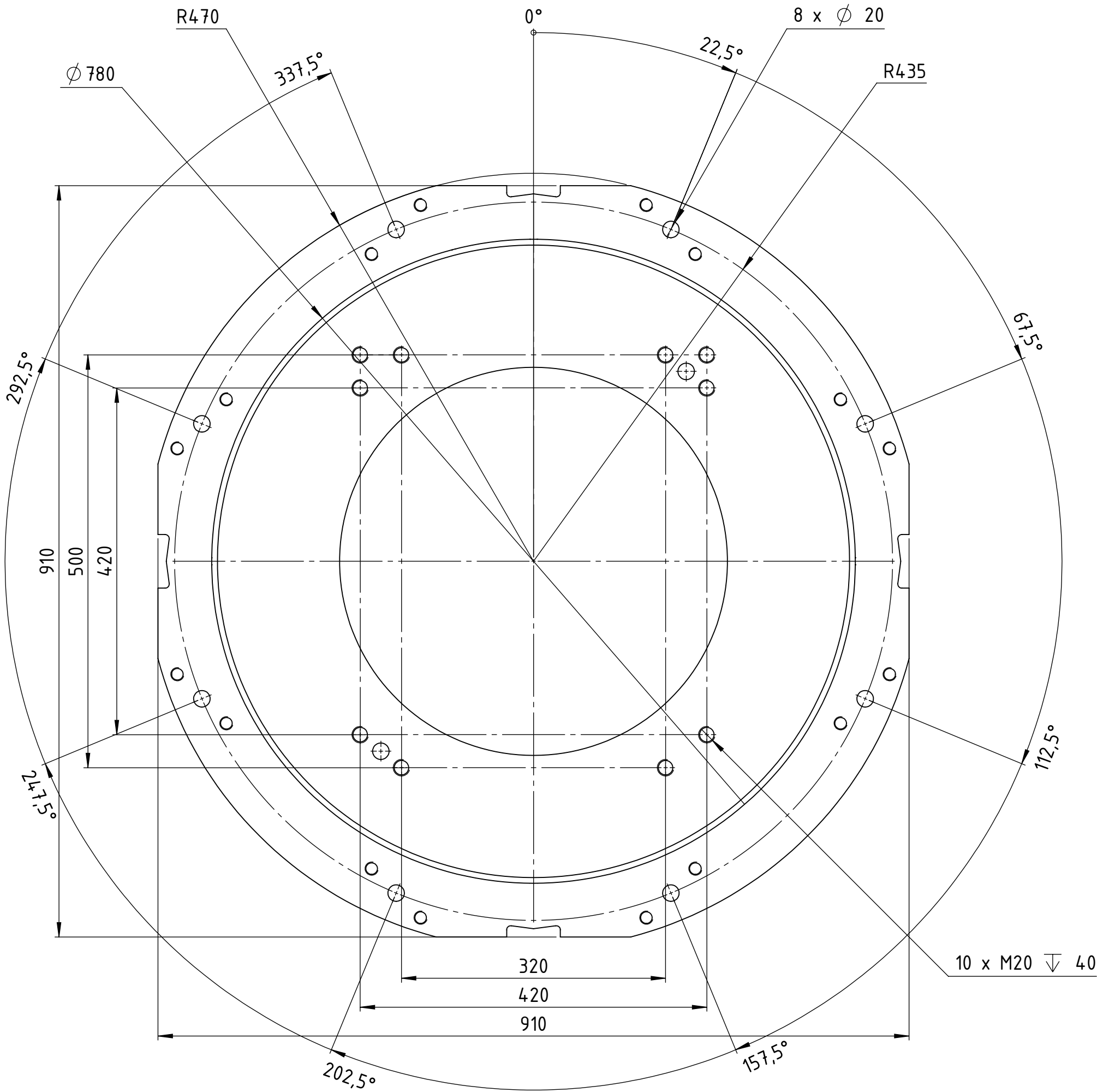
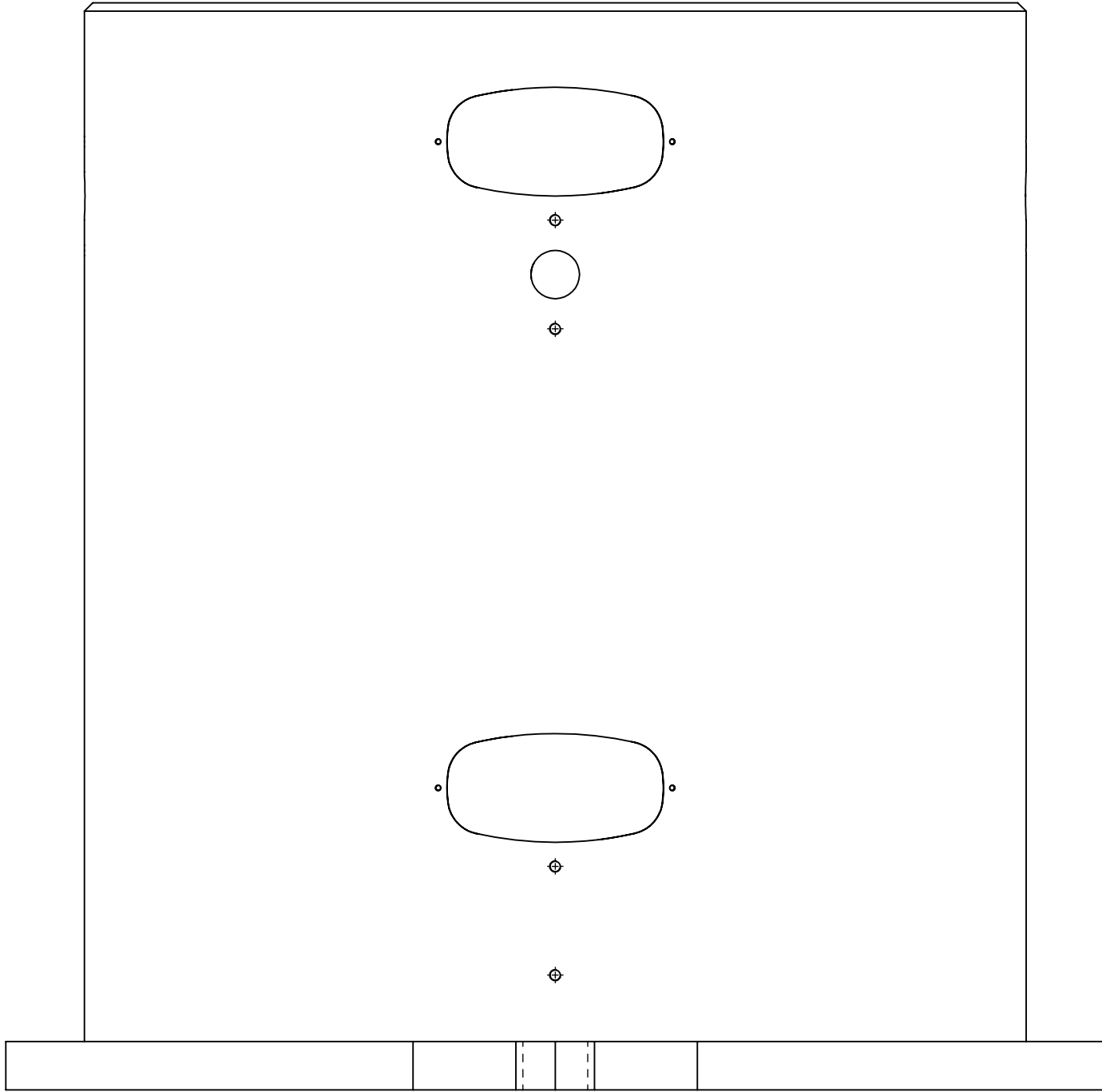
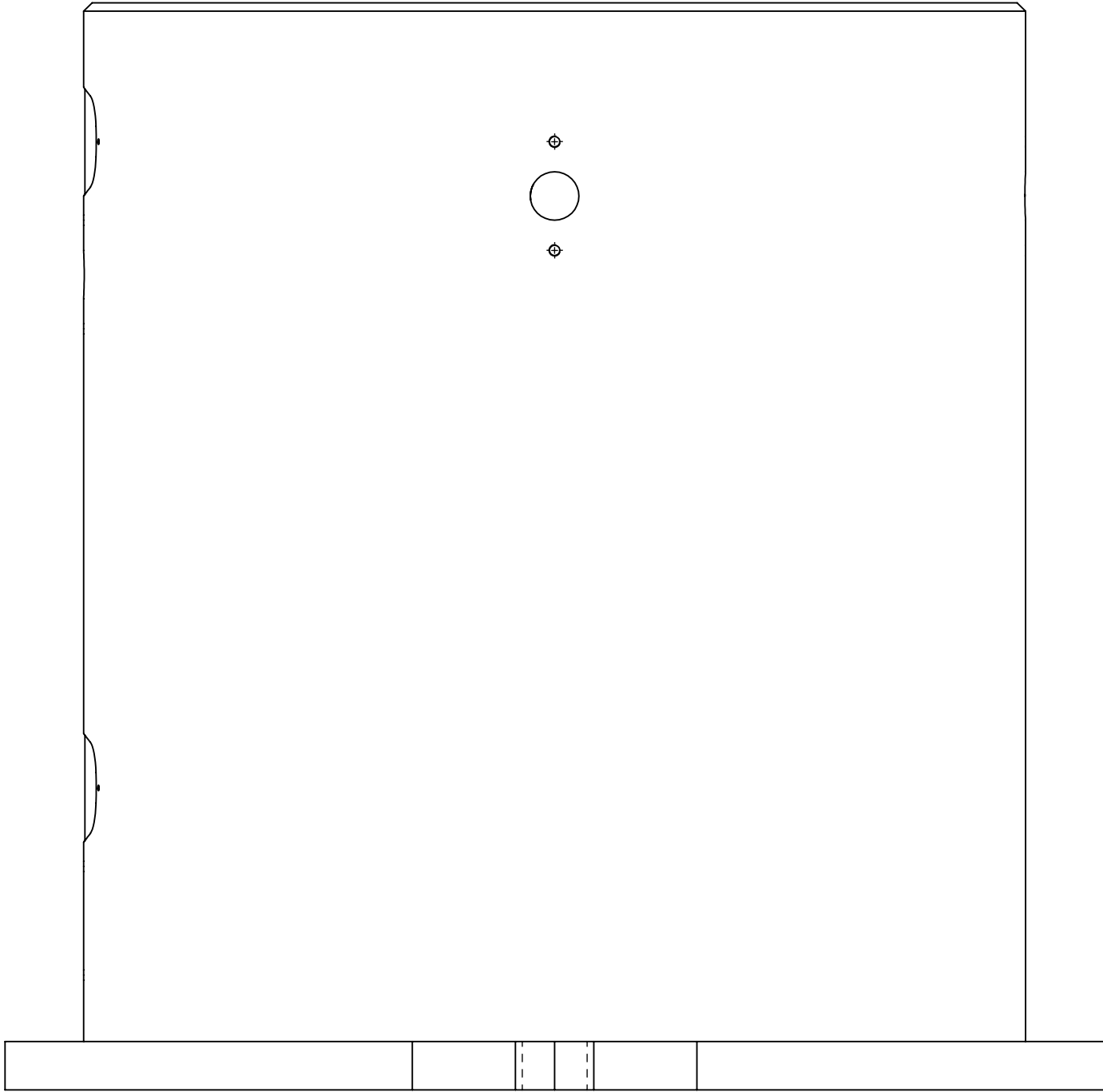
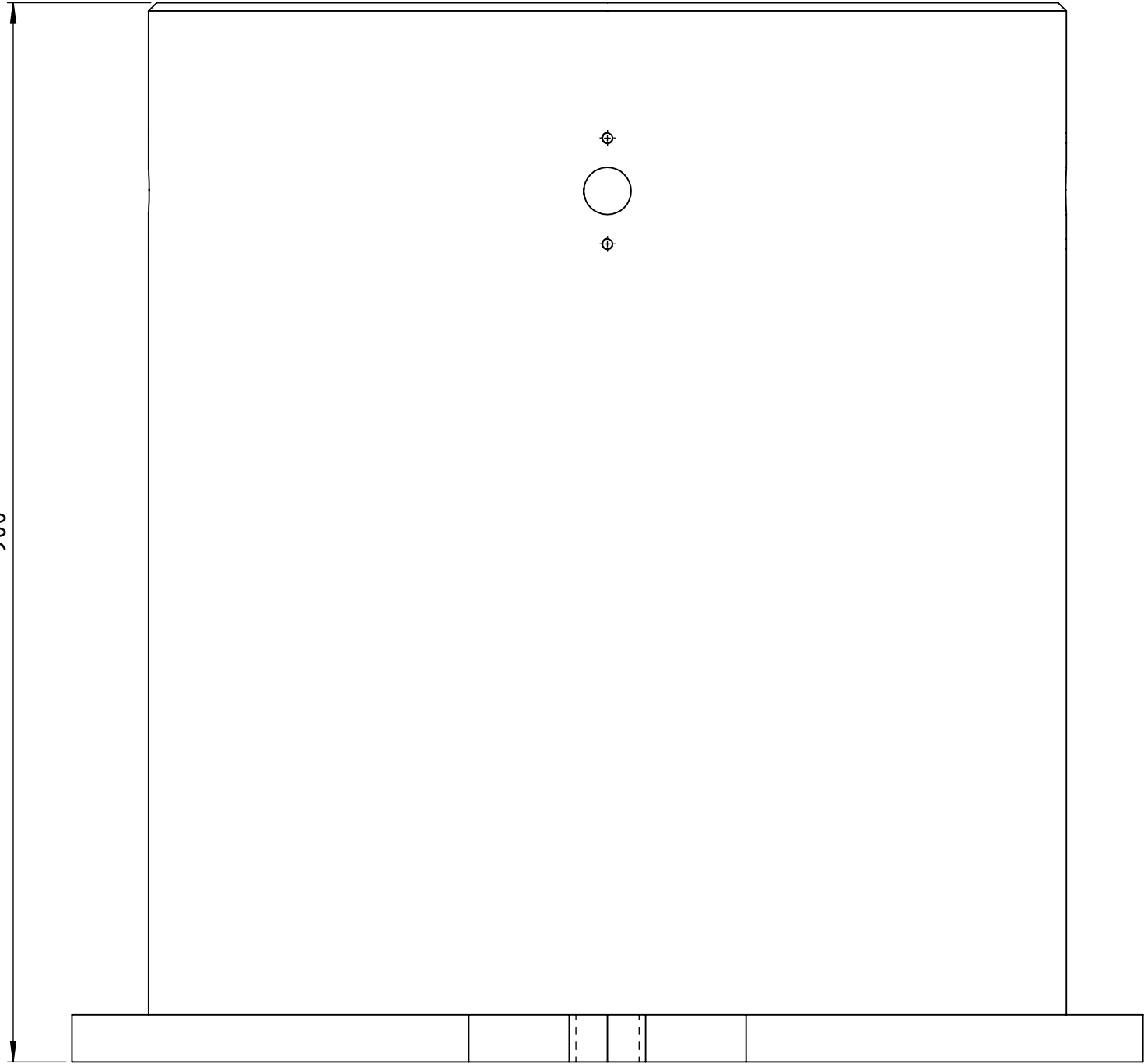
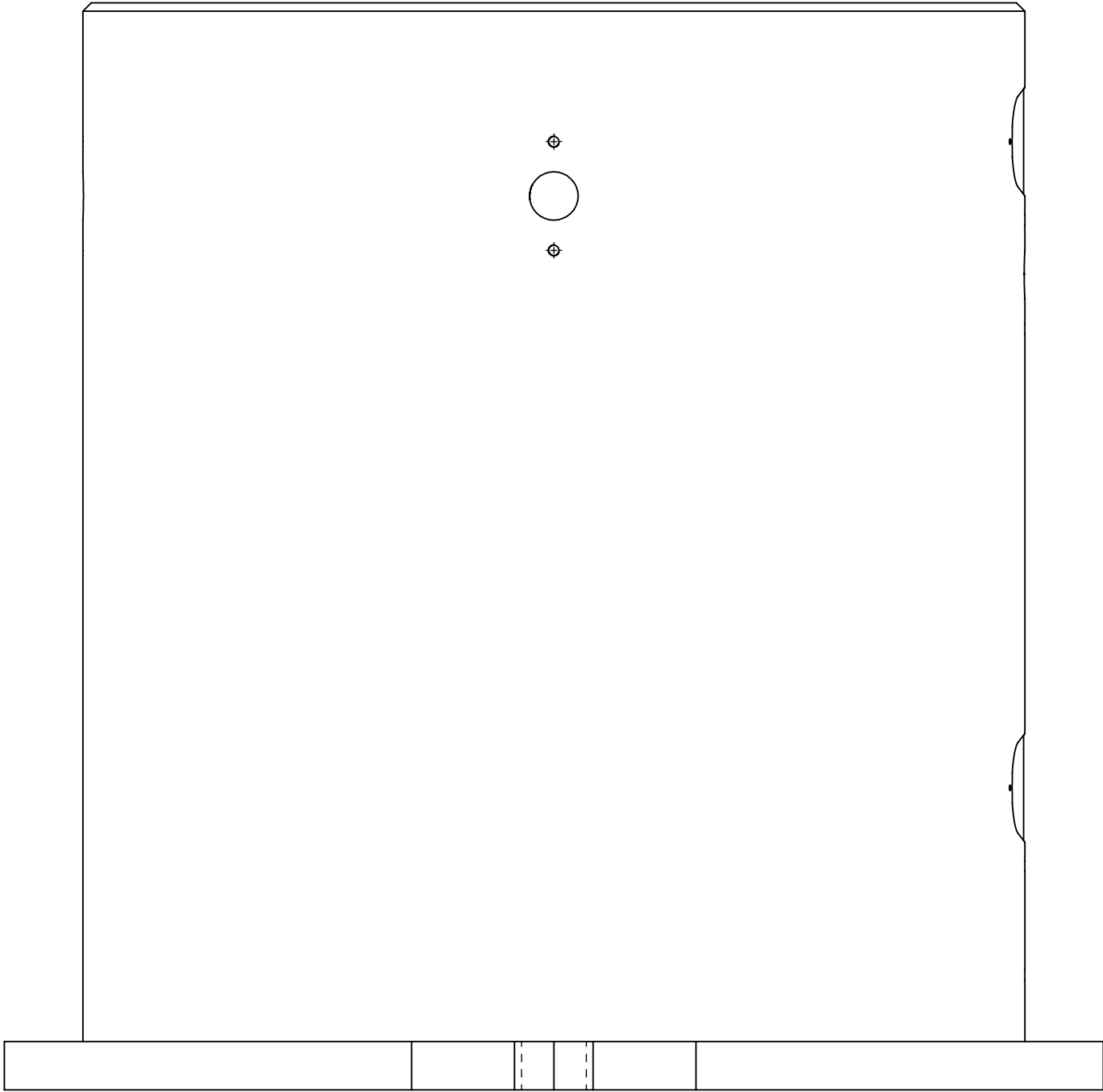


The reproduction, distribution and utilization of this document as well as the communication of its content to third parties without the written permission of Yaskawa Europe GmbH is prohibited. All rights reserved in the event of a patent, utility model or design.



rev	revision text	rev date	rev by	appr date	appr by
01	general simplification	2023-07-19	micNaeb	2023-07-19	micNaeb

where nothing else is indicated tolerances: DIN ISO 2768-mH welding: DIN EN ISO 15920-A no sharp edges	status: Released		dimension: weight: 227,482 kg		sheet: A1
	SAP EMEA no: 230779		www.yaskawa.eu.com		
	title / description: robot stand P-900		created: 2023-07-19 drawn: 2023-07-19 approved: 2023-07-19 drawing-no: 0001060242-100		
	revision: 02		revision: 15 4/5		

YASKAWA